

Cvi

www.cvintl.com

Global Challenges, Innovative Solutions.

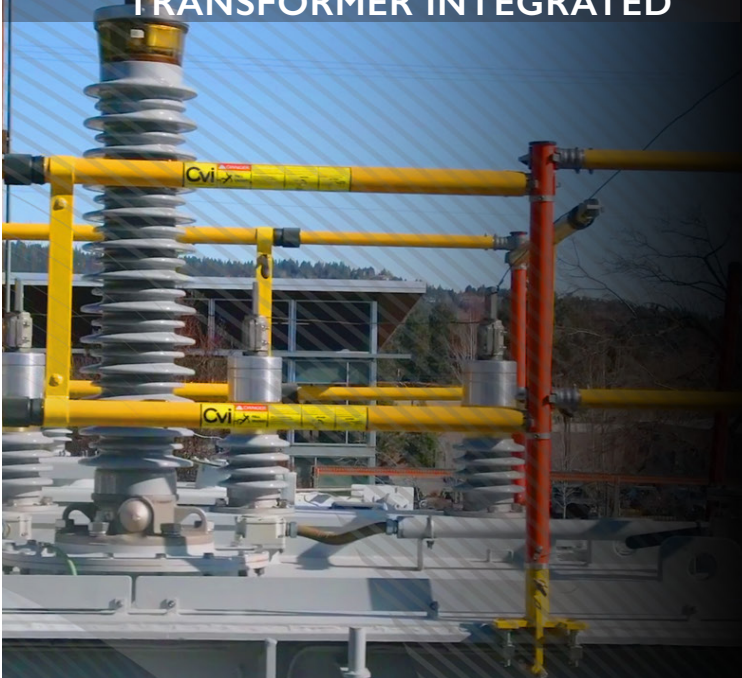
TIGR

Transformer Integrated Guard Rail

Work safely. Work in the cage.



TRANSFORMER INTEGRATED



OSHA COMPLIANT GUARDRAIL



RESCO
SUPPLYING THE COOPERATIVE ADVANTAGE

Distributed by RESCO | Joe Cochran, District Sales Manager - G&T Mobile: (605) 212-2567 jcochran@resco1.com

AGILE. INNOVATIVE.



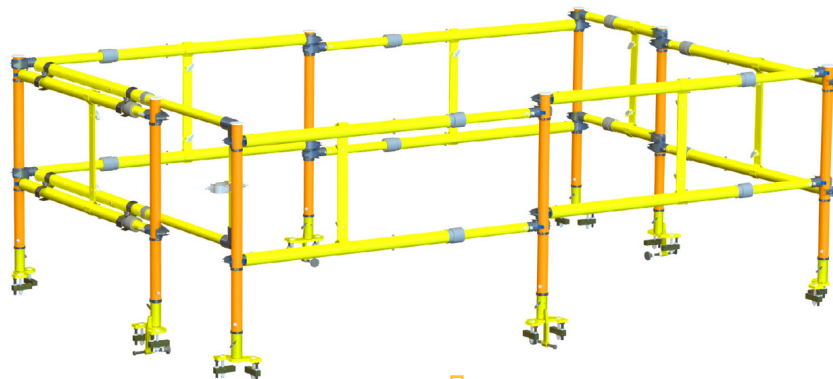
TRANSFORMER INTEGRATED GUARD RAIL

The Transformer Integrated Guard Rail (TIGR) is a guardrail fall prevention system providing an OSHA compliant guardrail around the top perimeter of industrial electrical transformers, eliminating the need for a maintenance worker to tether off by wearing a personal fall arrest harness.

INTEGRATION

- System can be retrofitted to existing transformers.
- Adjustable braces accommodate many types, sizes and configurations of transformers.
- Guardrail components can be collapsed and conveniently stored in a bag for transport.
- Post anchor assemblies are designed to be able to be left installed on a transformer for quick and easy installation of posts and guardrails for future maintenance activities.

TIGR SYSTEM (8 Post System with Sliding Gate and Center & Corner post Anchors)



3 OPTIONS

POST ANCHOR MOUNTING OPTIONS

1. Weld Pocket



The TIGR Weld Pocket is installed during transformer fabrication. Weld pockets are shipped directly to the transformer manufacturer.

2. TIGR Tooth Post Sockets

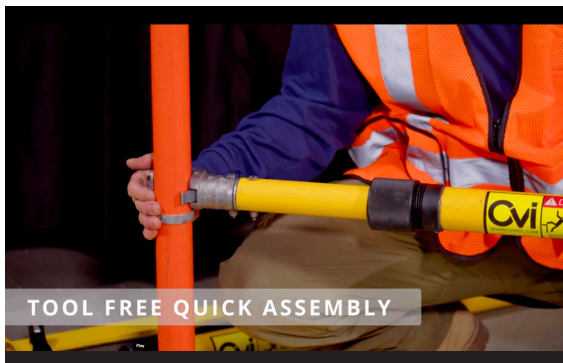


The TIGR Tooth is a three piece, proprietary system consisting of a socket, stud and taper washer that safely and easily attach post sockets to existing transformers in the field.

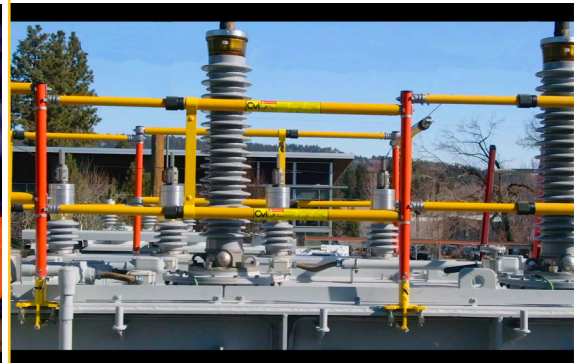
3. Center & Corner Post Anchors



The TIGR Center and Corner Post Anchors are mechanically installed to existing transformers in the field. The anchors are the only components of the TIGR system that require tools to install and can be easily removed if desired.



TOOL FREE QUICK ASSEMBLY



Various System Components

- | | |
|----------------|---------------|
| Poles | Weld Pocket |
| Rails | TIGR Tooth |
| Extending Gate | Center Anchor |
| Weld Pockets | Corner Anchor |

TIGR Eight Post System

Part Number: 526000-003

TIGR Ten Post System

Part Number: 526000-001A

Tools for Anchor Installation

- 9/16" Ratcheting Wrench
- 3/4" Open Wrench
- 3/4" Ratcheting Wrench
- Torque Wrench 100 ft/lbs min.
- 9/16" Socket
- 3/4" Deep Socket



Distributed by RESCO | Joe Cochran, District Sales Manager - G&T Mobile: (605) 212-2567 jcochran@resco1.com